

# HYVA CYLINDER



715 07 720

Front end cylinder with outer cover

type

FC 191-5-08130-000A-K0486

tipping weight

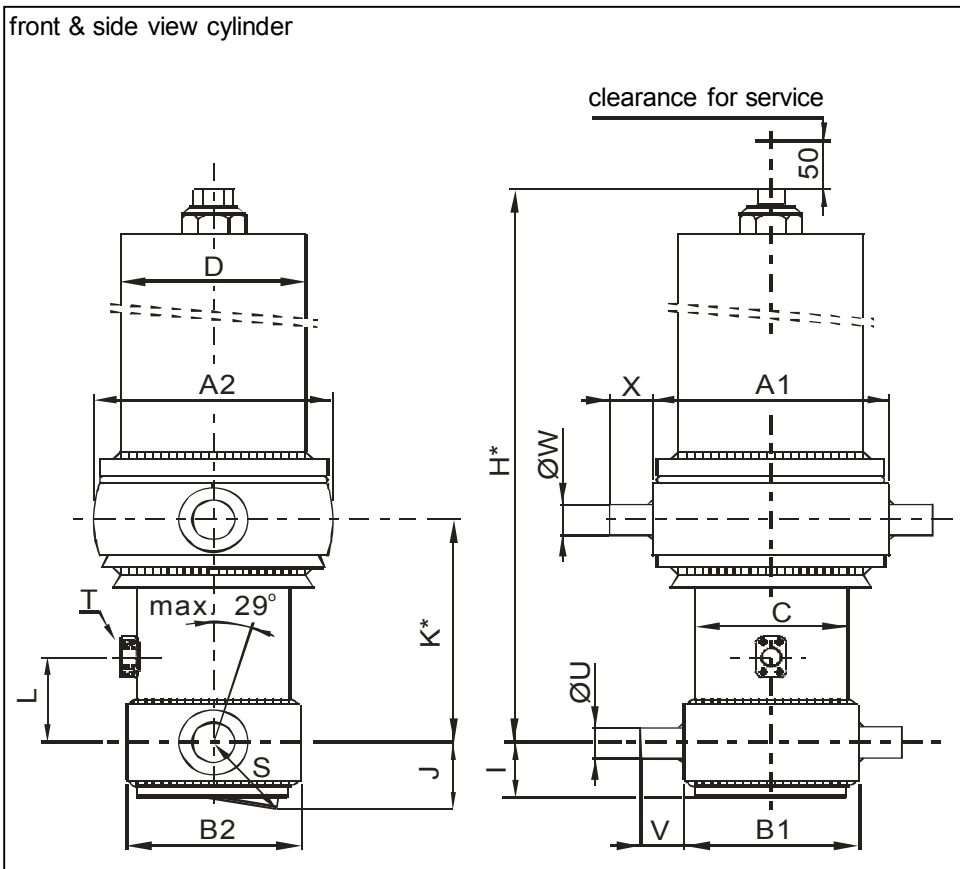
48-67 ton

page # 1 / 2

closed length (K)

481-516 mm

front & side view cylinder



	1	2	
A	360	362	mm
B	245	248	mm
C	214		mm
D	273		mm
E			mm
F			mm
G*			mm
H*	2002		mm
I	70		mm
J	116		mm
K*	486		mm
L	190		mm
M*			mm
N			mm
O			mm
P			mm
Q			mm
R			mm
S	139		mm
T	1" SAE		
U	60		mm
V	65		mm
W	60		mm
X	65		mm
Y			mm
Z			mm

\*incl.20[-5;30] pull out on piston

## specifications

weight cylinder only	463 kg
total volume	160 L
working volume	149 L
maximum pressure	190 bar
maximum pump flow	190 L/min
maximum cylinder angle to front	10 °
maximum thrust first stage**	40 ton

\*\*when cyl. mounted at a large angle, thrust first stage may become too high: see Hyva Tipper Program

## technical notes

This cylinder is a lifting device only and may not be used as structural member or be subject to side load. Working pressure depends on application; never exceed maximum pressure stated. Cylinder is painted black (RAL9005). Max duration of extension 0.5 hours (excluded HC). See specification sheet CYL-0019 for mounting instructions, OIL-0011 for oil specifications and 015BRA01 for bracket specifications.

extension	1	2	3	4	5	6	7	8	9	
effective diameter [mm]	191	169	149	129	110					total
stroke [mm]	1610	1630	1630	1630	1630					8130

## tipping weight

tipping weight at maximum pressure of 190 bar and C is 229 mm

BL (body length); OH (rear overhang); X=Ycog (vert. pos. centre of gravity); Qo (pivot length); C (bracket length);  At = stroke x 60 / Qo	BL	10800			10400			10000		
	OH	200	500	800	200	500	800	200	500	800
At	44	46	47	46	48	49	48	50	51	
Ycog										
600	48	51	54	49	52	55	51	54	58	
900	50	53	57	52	55	59	54	57	62	
1200	53	56	60	55	59	63	57	61	67	

# HYVA CYLINDER

715 07 720

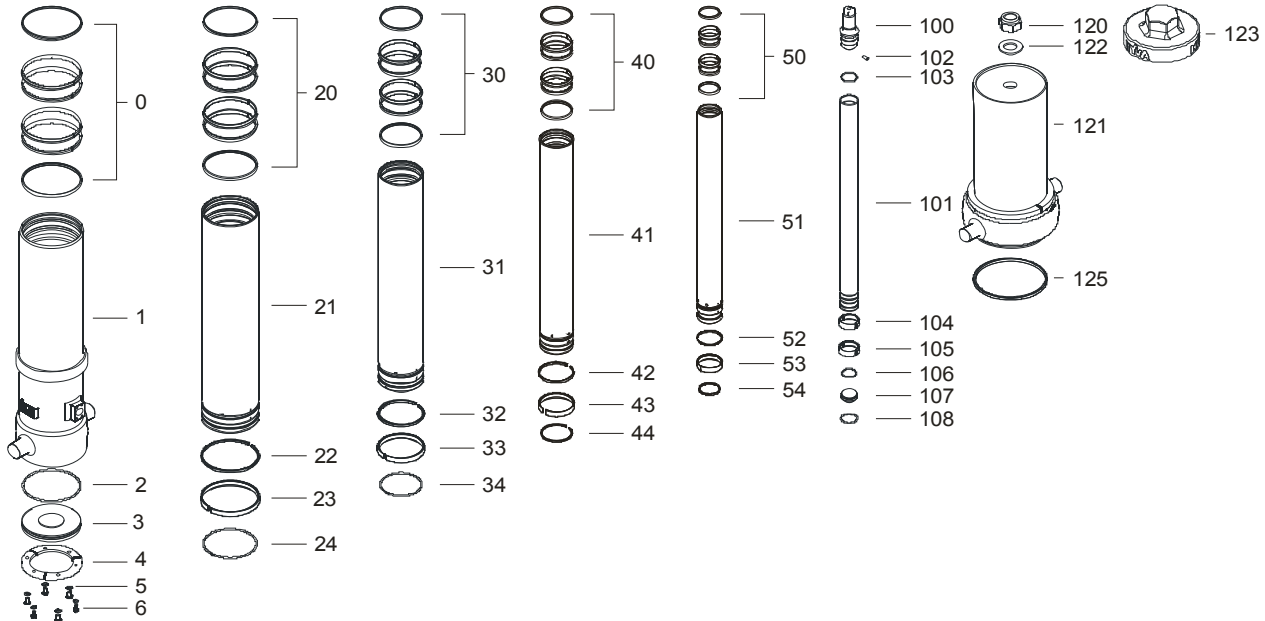


Front end cylinder with outer cover

type

FC 191-5-08130-000A-K0486

page # 2 / 2



## Spare part list

Pos	Part no.	Description	Qty.
0	71802214 K	PACKSET FL 214	01
1	72508770R1435	BASE 214-1927-4/4SAE-190-C273	01
2	71870045 K	SEAL BOTTOM PLATE 214	01
3	71821214	BOTTOM PLATE 214	01
4	71820214	LOCKING PLATE 214	03
5	01732523 K	SPRING WASHER M12 SET	01
6	01732020 K	BOLT M12 X 1.25 X 25 SET	01

20	71802191 K	PACKSET FL 191	01
21	72607770	STAGE 191-1880	01
22	71811191 K	OUTER STOPRING FL 191	01
23	71807191 K	SLIDER FL 191	01
24	71813191 K	LIFTRING FL 191x5	01

30	71802169 K	PACKSET FL 169	01
31	72606770	STAGE 169-1880	01
32	71811169 K	OUTER STOPRING FL 169	01
33	71807169 K	SLIDER FL 169	01
34	71813169 K	LIFTRING FL 169x5	01

40	71802149 K	PACKSET FL 149/HP 150	01
41	72605770	STAGE 149-1880	01
42	71811149 K	OUTER STOPRING FL 149	01
43	71807149 K	SLIDER FL 149	01
44	71812149 K	LIFTRING FL 149/HP 150	01

## Seal kit complete:

Part no.	Description
71901750 K	Seal kit complete: consists of all packsets with packset grease, O-rings and Pin (pos.102)

## Spare part list

Pos	Part no.	Description	Qty.
50	71802129 K	PACKSET FL 129/HP 129	01
51	72604770	STAGE 129-1880	01
52	71811129 K	OUTER STOPRING FL 129/HP 129 HD	01
53	71807129 K	SLIDER FL 129/GF 129 (2 X 1/2)	01
54	71812129 K	LIFTRING FL 129/HP 129	01

100	71831110	PISTON HEAD 110 MACHINED	01
101	72403771	PISTON S 110-1885-HC	01
102			
103	71870120 K	O-RING PISTON TOP 110	01
104	71811110 K	OUTER STOPRING FL 110/HP 110 HD	01
105	71807110 K	SLIDER FL 110/GF 110 (2 X 1/2)	01
106	71870220	O-RING PISTON BOTTOM 110	01
107	71822110	BOTTOM PLATE PISTON 110	01
108	01745050	CIRCLIP 100 DIN 472 (105.5X3.0)	01

120	01702907	TOPNUT NYLOC M48x3 DIN 985 ZP	01
121	71707701	COVER 273-1535 PIN60	01
122	01702956	WASHER M48 DIN 125B ZP	01
123	01702971	DUST COVER FOR COVER 273 YELLOW	01
125	01791953	O-RING COVER D273	01

## Notes:

The inner and outer stoprings are pre-mounted in the grooves on spare stages and pistons. Therefore, when ordering new tubes, it is not required to order stopring separately.