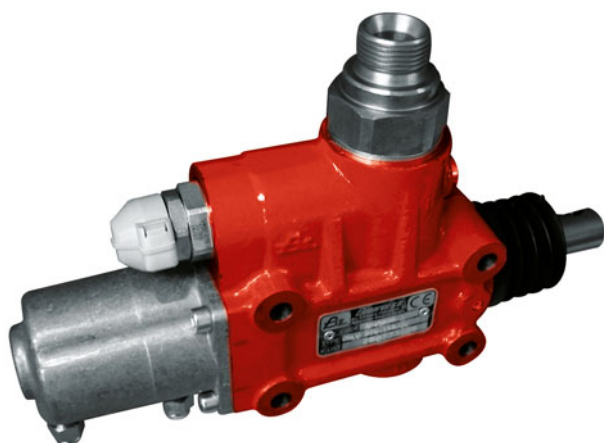


# Distribuidor BZD-BZV 150

## BZD-BZV 150 Tipping Valve

### Descripción Description



Válvula para volquete, centro abierto proporcional o centro cerrado de dos velocidades de bajada de 150 litros con accionamiento neumático, con válvula limitadora de presión ajustable hasta 350 bar. Incorpora válvula antirretorno, final de carrera mediante tirador o pulsador, presostato de funcionamiento opcional y toma de presión.

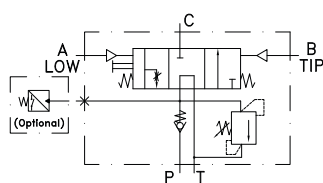
150 litres proportional open circuit or close circuit tipping valve, pneumatic operated, with 350 bar relief valve. It also includes check valve, pull-push end of stroke, pressure switch as option and pressure connection port.

### Datos Principales Main Data

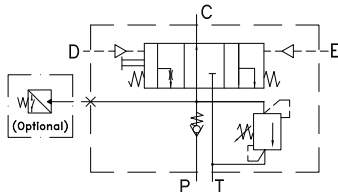
Modelo Model	BZDP 150 (Tirador / Pull)	BZDP 150 (Empujador / Push)	BZV 150-2V (Empujador / Push)	BZV 150-2V (Tirador / Pull)	BZVP 150 (Empujador-Tirador) (Push-Pull)
Codigo Part Number	9044190/3	9041890/3	9045190/3	9045090/3	9045290/3
Caudal de entrada Input Flow	100 L.				
Caudal de bajada Low Flow	150 L.				
Presión máx. Max. pressure	350 Bar				
Rosca Thread	1" BSP				
Peso Weight (Kg)	5.40				

### Esquemas hidráulicos Hydraulic Diagrams

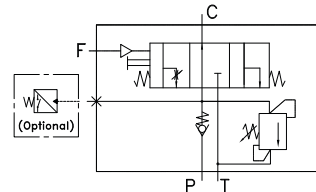
BZDP 150  
9041890/3 9044190/3  
(Empujador / Push) (Tirador/Puller)



BZV 150 -2V  
9045090/3 9045190/3  
(Tirador / Pull) (Empujador/ Push)



BZVP 150  
9045290/3  
(Tirador-Empujador / Push-Pull)

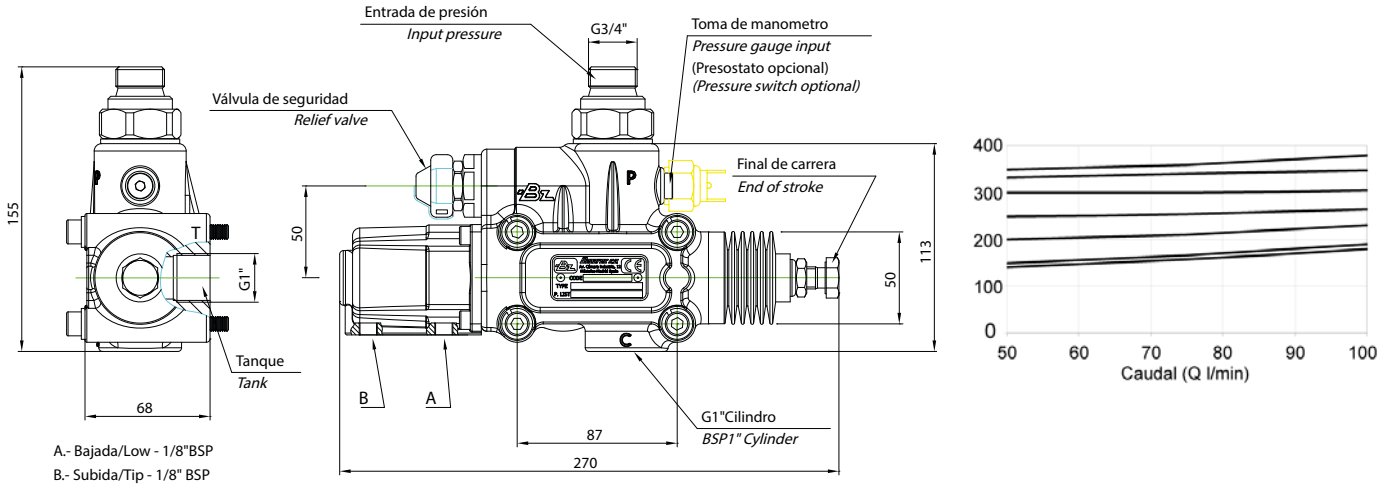


(\* ) Ver notas See notes

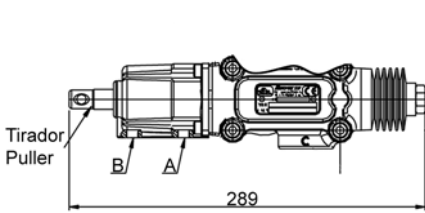
# Distribuidor BZD-BZV 150

## BZD-BZV 150 Tipping Valve

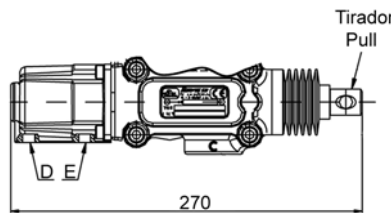
### BZDP 150 (9041890/3) Empujador /Pull



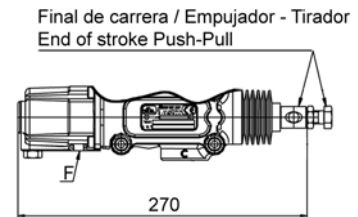
### BZDP 150 Tirador/Pull (9044190/3)



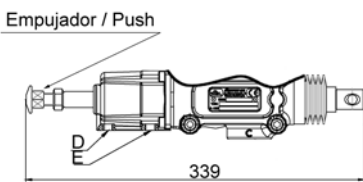
### BZV 150 - 2V (9045090/3)



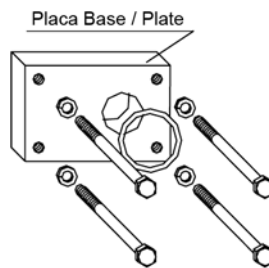
### BZVP 150 (9045290/3)



### BZV-2V 150 Empujador/Push (9045190/3)



Opcional Código: 9043690 Optional Part Number: 9043690



Importante:  
Par de apriete max. para tornillos placa base: 20 Nm  
Important:  
Max. torque wrench for base plate screws: 20 Nm

### Notas Notes

A	Bajada 1/8" GAS	A	Low 1/8" BSP
B	Subida 1/8" GAS	B	Tipping 1/8" BSP
D	Bajada rápida 1/8" GAS	D	Rapid 1/8" BSP
E	Bajada lenta 1/8" GAS	E	Slow 1/8" BSP
F	Bajada proporcional 1/8" GAS	F	Proportional Lowering 1/8" BSP